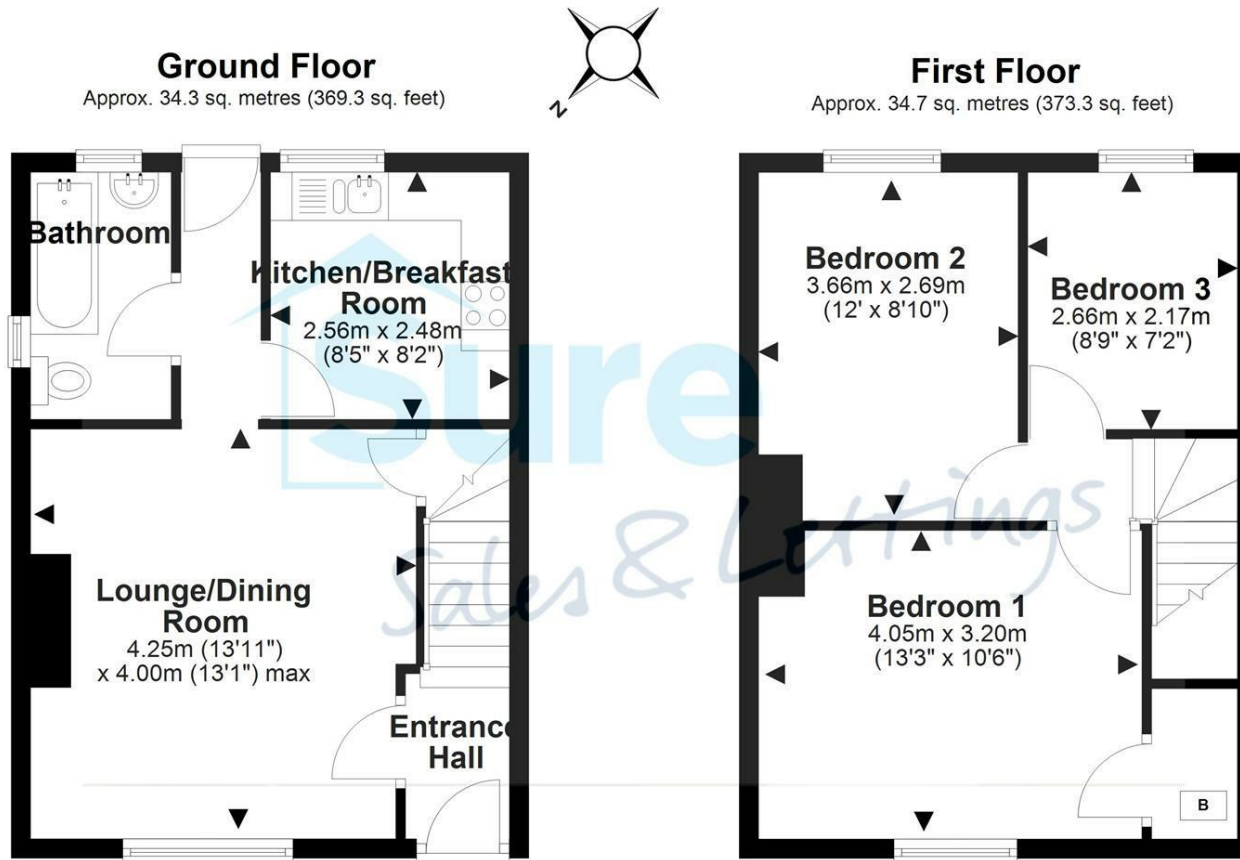


**11 THAMES ROAD, CHELTENHAM, GLOUCESTERSHIRE, GL52 5PU**

**£1,250 PER CALENDAR MONTH**

**CHELTENHAM BOROUGH COUNCIL B**





## **Per Calendar Month**

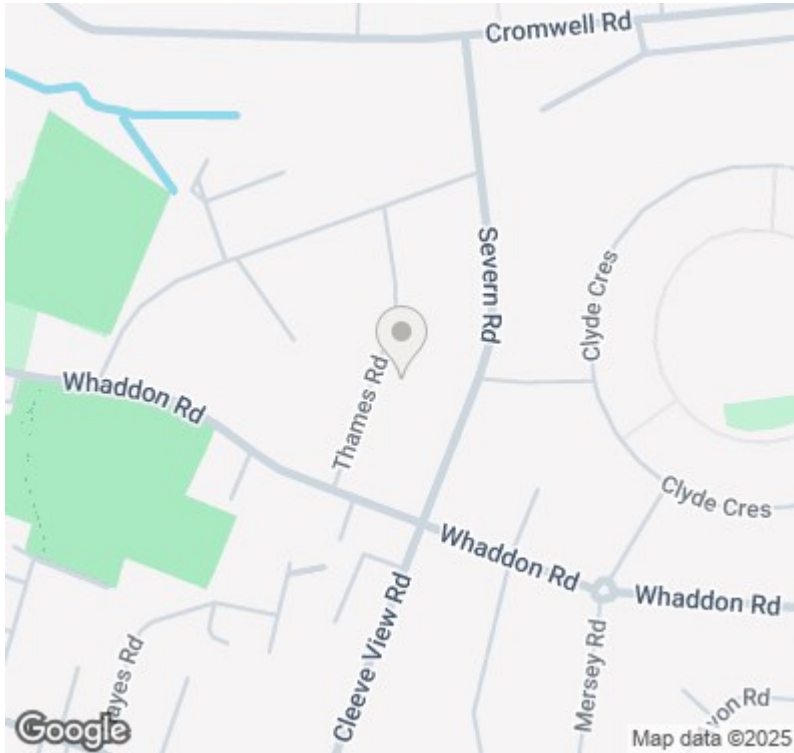
### **£1,250 Per Calendar**


SureLet Cheltenham are pleased to offer a very well established THREE BEDROOM SEMI DETACHED HOUSE in Whaddon. The property is vacant immediately and briefly comprises of entrance to hall and stairwell, Large Lounge with FEATURE FIRE PLACE, rear fitted kitchen and down stairs bathroom. Upstairs provides, a very large double bedroom with built in wardrobe, a generous second double bedroom and large single third bedroom. Further benefits include gas central heating, double glazing, secure front and rear low maintenance gardens, rear storage shed/outhouse, ample internal storage and on street non restricted parking









Energy Efficiency Rating		
	Current	Potential
Very energy efficient - lower running costs		
(92 plus) <b>A</b>		<b>86</b>
(81-91) <b>B</b>		
(69-80) <b>C</b>	<b>64</b>	
(55-68) <b>D</b>		
(39-54) <b>E</b>		
(21-38) <b>F</b>		
(1-20) <b>G</b>		
Not energy efficient - higher running costs		
<b>England &amp; Wales</b> EU Directive 2002/91/EC 		

Sure Property Group  
 23 Bath Street, Cheltenham  
 GL50 1YA  
 01242 241200  
[info@surecheltenham.co.uk](mailto:info@surecheltenham.co.uk)

Cheltenham Borough Council  
 COUNCIL TAX BAND B